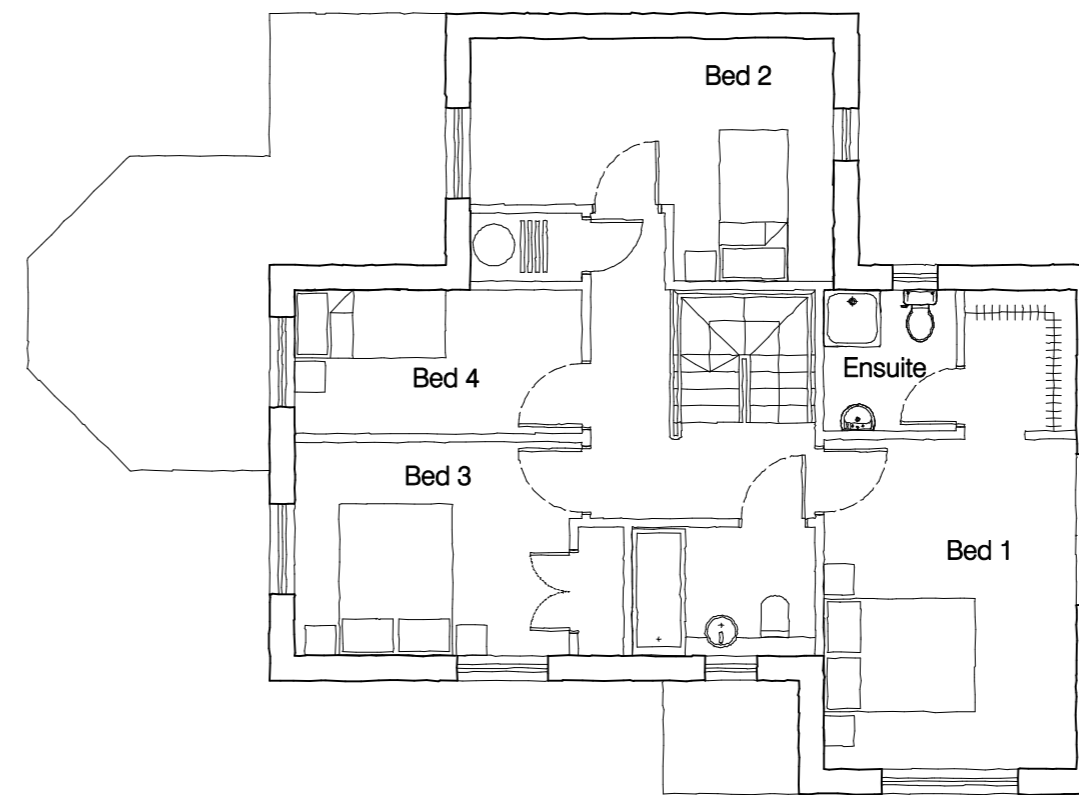
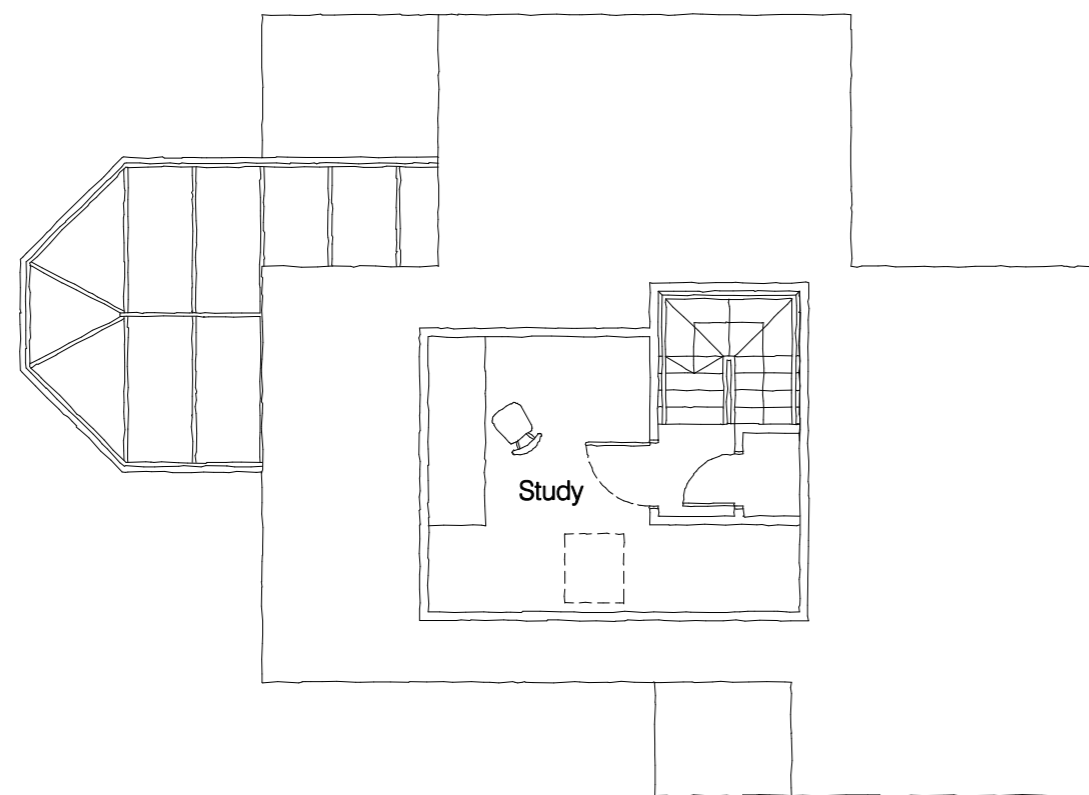


GROUND



FIRST



LOFT

4 BED 6 PERSON HOUSE
Double Garage
157.5m² GIA

REV	DATE	NOTE	BY
A	Aug 09	garage reduced minor amendments	spb

FOR PLANNING



bbr architects
78 Blehouse street
hitchin
herfordshire
sp5 2dy
telephone: 01462 420800
fax: 01462 456955
e-mail: info@bbr-architects.co.uk
www.bbr-architects.co.uk

PROPOSED RESIDENTIAL
DEVELOPMENT AT
249-253 WATFORD ROAD
CROXLEY GREEN

HOUSE TYPE A

PLANS

SCALE	DATE	DRAWN	CHECKED BY	DRAWING NUMBER	REVISION
1:100 at A2	May 2009	BJS		03	A
JOB NUMBER	08562				