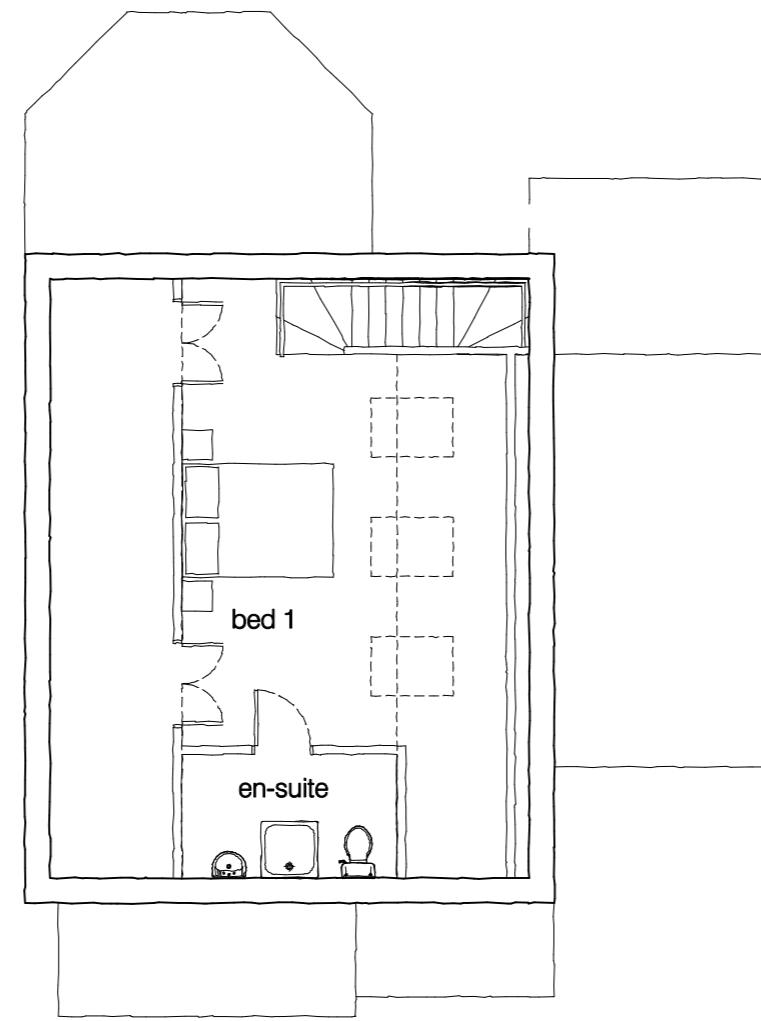
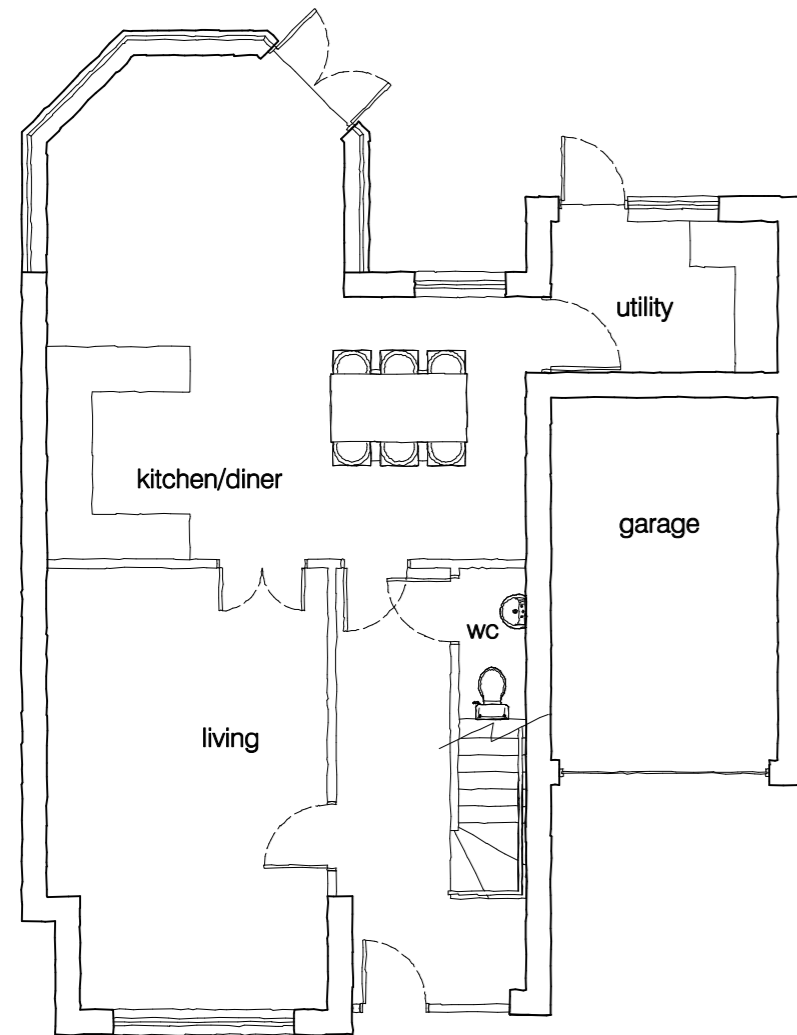


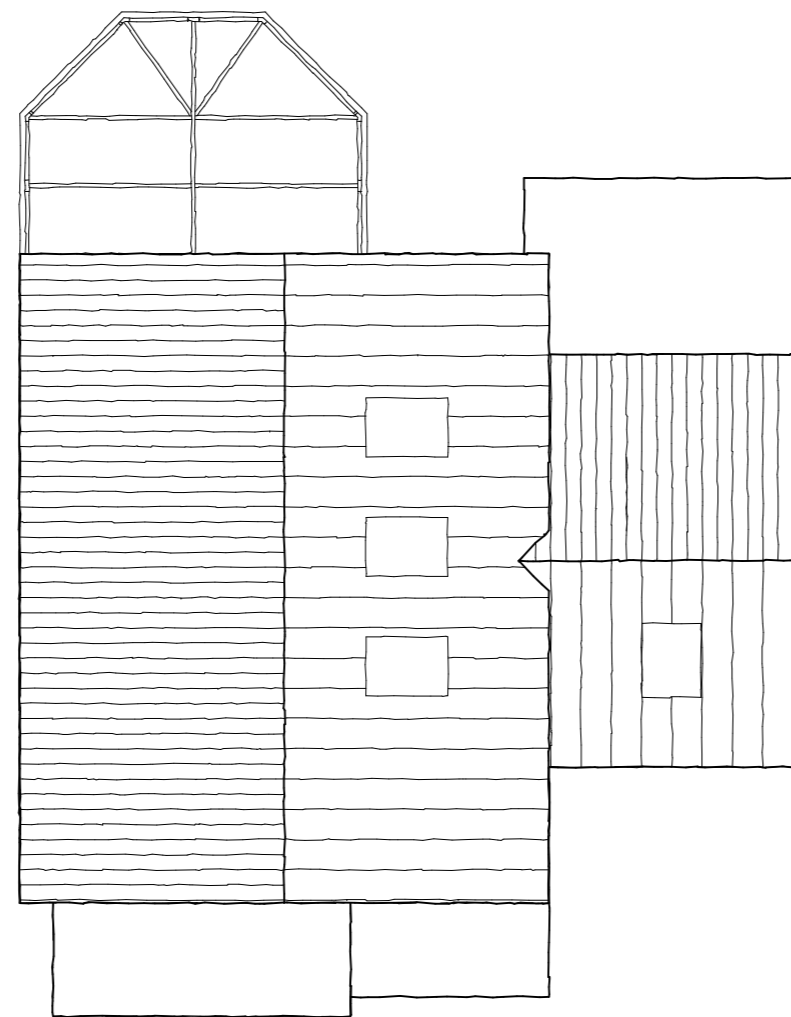
FIRST



LOFT



GROUND



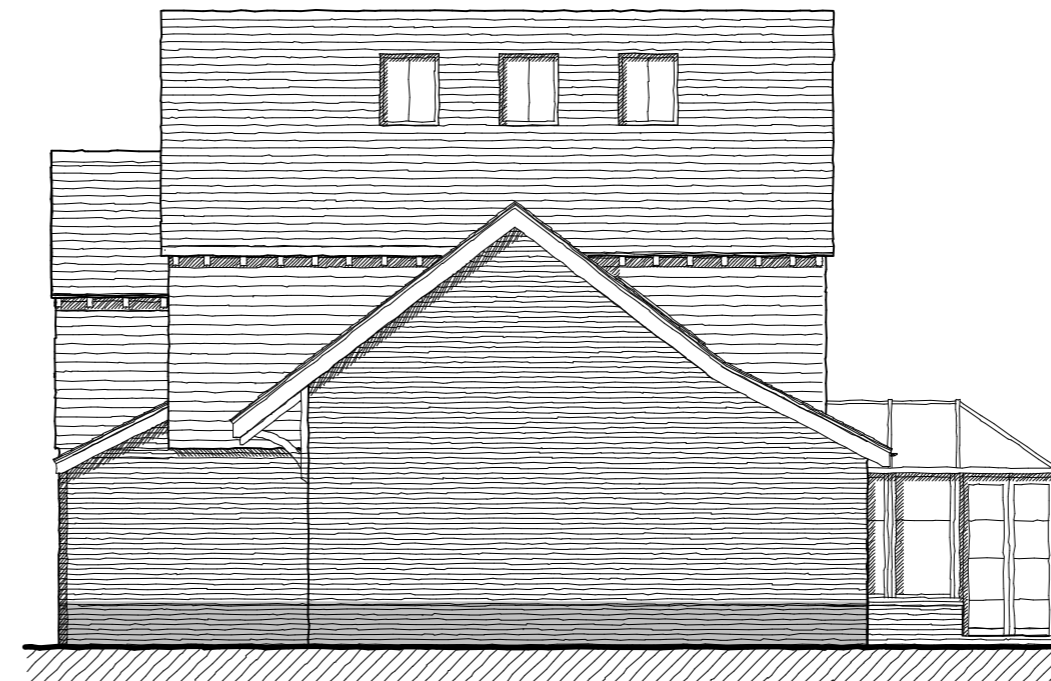
ROOF



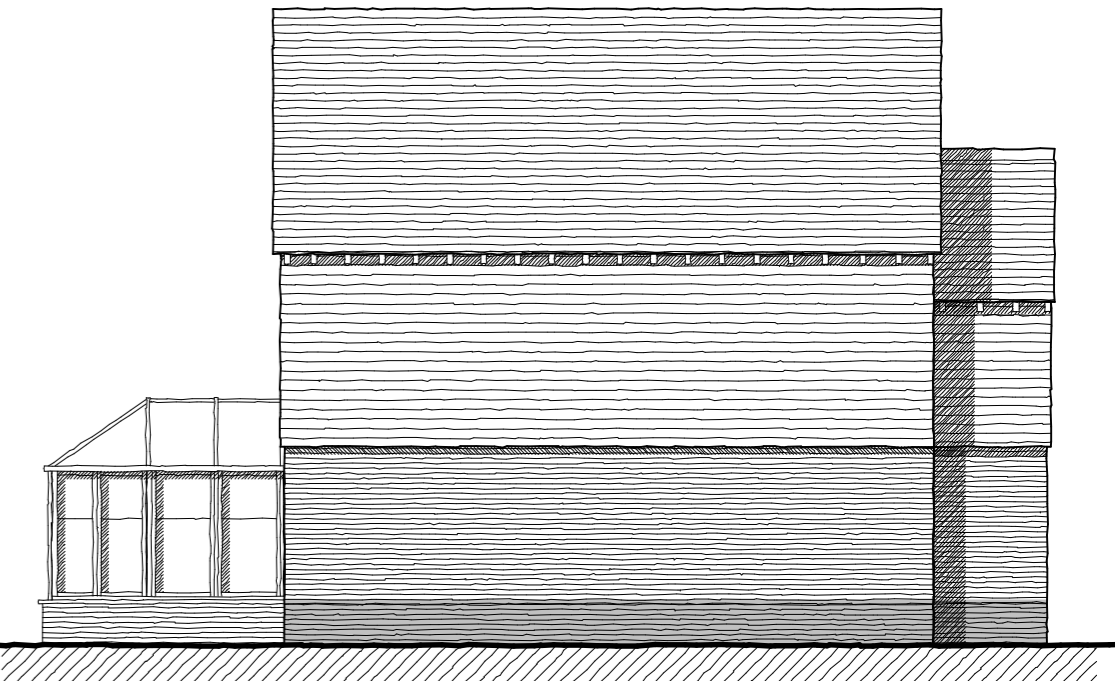
REAR



FRONT



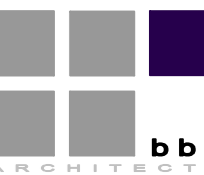
SIDE



SIDE

A	Aug 09	revised for planning garage and roof amended	-
REV	DATE	NOTE	BY

FOR PLANNING



bbr architects
78 Blehouse street
hitchin
hertfordshire
sg5 2dy
telephone: 01462 420800
fax: 01462 458955
e-mail: info@bbr-architects.co.uk
www.bbr-architects.co.uk

**PROPOSED RESIDENTIAL
DEVELOPMENT AT
249-253 WATFORD ROAD
CROXLEY GREEN**

HOUSE TYPE C

PLANS & ELEVATIONS

SCALE	1:100 at A2	DRAWING NUMBER	07	REVISION	A
DATE	May 2009				
DRAWN	BJS				
JOB NUMBER	08562				CHECKED BY