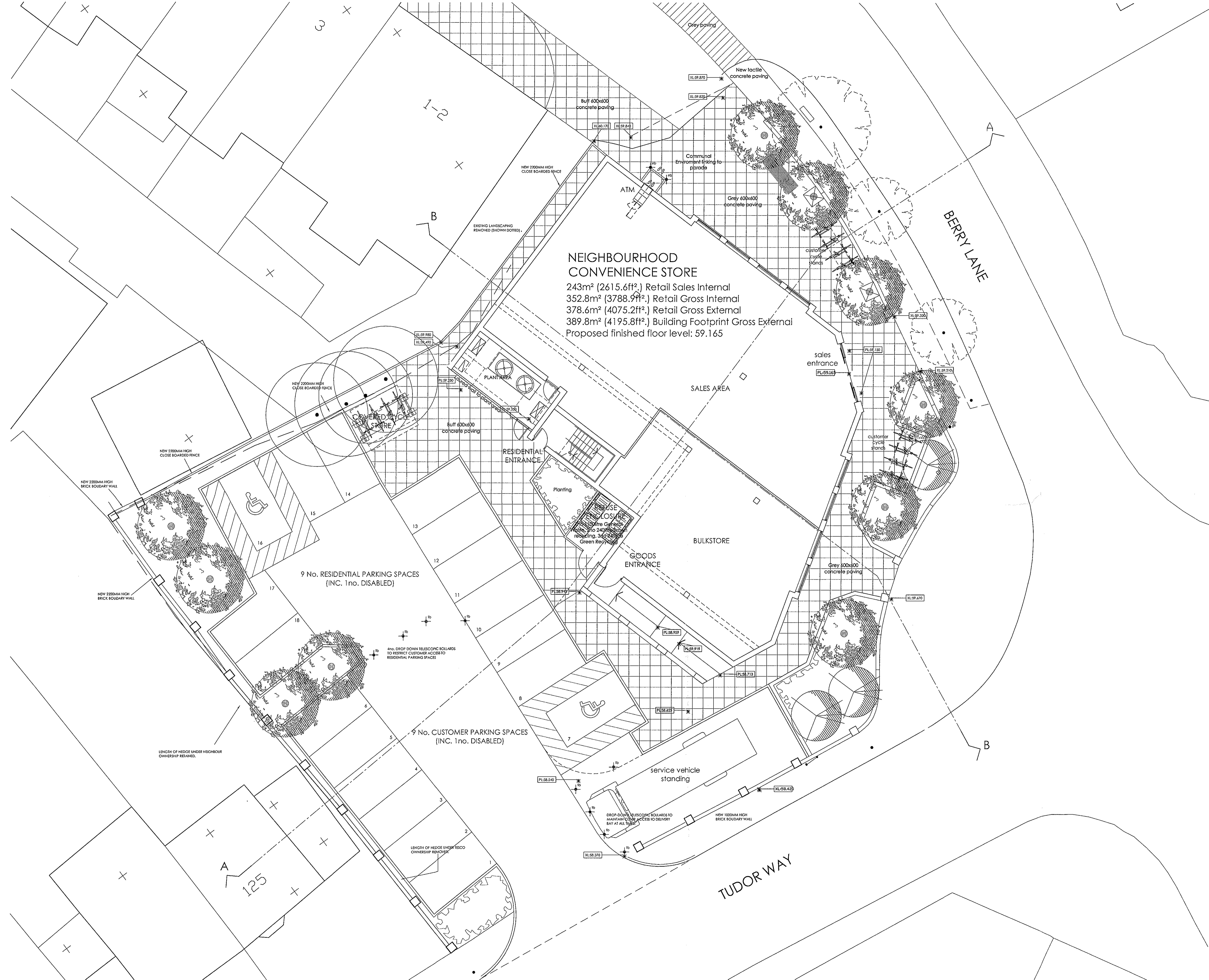


NEIGHBOURHOOD CONVENIENCE STORE
 243m² (2615.6ft²) Retail Sales Internal
 352.8m² (3788.9ft²) Retail Gross Internal
 378.6m² (4075.2ft²) Retail Gross External
 389.8m² (4195.8ft²) Building Footprint Gross External
 Proposed finished floor level: 59.165



FOR APPROVAL

- Rev J: 04.03.09 Minor external changes DW
- Rev H: 03.02.09 Minor external changes FK
- REV G: 19.01.2009 GENERAL AMENDMENTS. DW
- REV F: 15.01.2009 GENERAL AMENDMENTS. DW
- REV E: 08.01.2009 FLOOR AREA REDUCED, BIN STORE & PLANT RELOCATED, LANDSCAPING ADDED. SA
- REV D: 28.10.2008 BOUNDARY WALL HEIGHT ASSOCIATED, NO OF PARKING SPACES REVISED. JW
- REV C: 22.10.2008 BOUNDARY TREATMENT AMENDED, BERRY LANE DISABLED SPACES OMITTED, REFUSE BIN DEFINED. JW
- REV B: 31.07.2008 NOTES UPDATED. KW
- REV A: 08.07.2008 GENERAL AMENDMENTS. By Approved

archer
 architects

Office 7, Gateway 1000
 Arlington Business Park
 Whittle Way
 Stevenage
 Hertfordshire
 SG1 2FP
 t: 01438 749400
 arc@archerarchitects.co.uk

Client:
TESCO EXPRESS

Project:
**Former HAPPY MAN PH
 BERRY LANE, RICKMANSWORTH**

Drawing Title:
PROPOSED SITE PLAN

Scale:	Date:	Drawn:	Checked:
1:100@A1	24.01.2008	MW	MW
Project No:	Drawing No:	Revision:	
3291	(P)501	J	